

Generator set specifications

ENGINE MODEL LINE-UP - MARINE GENERATOR SET

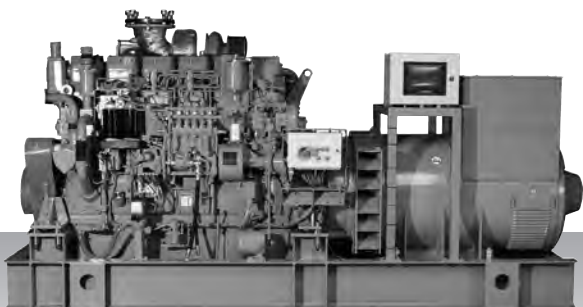
Series	100 kW	500 kW	1,000 kW	2,000 kW	5,000 kW
MAS 650-S		652	753		
MAS 760-S		594	765		
MAS 850-S		765	847		
MAS 1350-S				1,351	1,529
MAS 1795-S				1,337	2,041
MAS 2350-S				1,881	2,358

Generator set products - IMO Tier II / EU-3A

Engine model	kVA	kWe	rpm	Hz	Emission	Page
Diesel-electric propulsion						
50 Hz						
MAS 650-S	652	522	1,500	50	IMO-T2	93
MAS 760-S	765	612	1,500	50	IMO-T2	94
MAS 850-S	847	678	1,500	50	IMO-T2	95
MAS 1350-S	1,351	1,081	1,500	50	IMO-T2	96
MAS 1795-S	1,796	1,437	1,500	50	IMO-T2	97
MAS 2350-S	2,358	1,886	1,500	50	IMO-T2	98
60 Hz						
MAS 650-S	684	548	1,800	60	IMO-T2	93
MAS 760-S	594	476	1,200	60	IMO-T2	94
MAS 850-S	898	718	1,800	60	IMO-T2	95
MAS 1350-S	999	799	1,200	60	IMO-T2	96
MAS 1350-S	1,385	1,108	1,800	60	IMO-T2	96
MAS 1795-S	1,337	1,070	1,200	60	IMO-T2	97
MAS 1795-S	1,857	1,485	1,800	60	IMO-T2	97
MAS 2350-S	1,881	1,505	1,200	60	IMO-T2	98
Auxiliary generator						
50 Hz						
MAS 650-S	652	522	1,500	50	IMO-T2	93
MAS 760-S	765	612	1,500	50	IMO-T2	94
MAS 850-S	847	678	1,500	50	IMO-T2	95
MAS 1350-S	1,351	1,081	1,500	50	IMO-T2	96
MAS 1795-S	1,796	1,437	1,500	50	IMO-T2	97
MAS 2350-S	2,358	1,886	1,500	50	IMO-T2	98
60 Hz						
MAS 650-S	753	603	1,800	60	IMO-T2 / EU-3A	93
MAS 760-S	594	476	1,200	60	IMO-T2	94
MAS 850-S	988	790	1,800	60	IMO-T2	95
MAS 1350-S	999	799	1,200	60	IMO-T2	96
MAS 1350-S	1,529	1,223	1,800	60	IMO-T2	96
MAS 1795-S	1,337	1,070	1,200	60	IMO-T2	97
MAS 1795-S	2,041	1,633	1,800	60	IMO-T2	97
MAS 2350-S	1,881	1,505	1,200	60	IMO-T2	98

Generator set -
IMO Tier II / EU-3A

MAS 650-S



Engine model S6R-(Z3)MPTAW

Commercial rating

	kVA	kWe	rpm	Hz	Emission
Diesel-electric propulsion	652	522	1,500	50	IMO-T2
	684	548	1,800	60	IMO-T2
Auxiliary generator	652	522	1,500	50	IMO-T2
	753	603	1,800	60	IMO-T2 / EU-3A

Specifications/ data subject to change without prior notice.

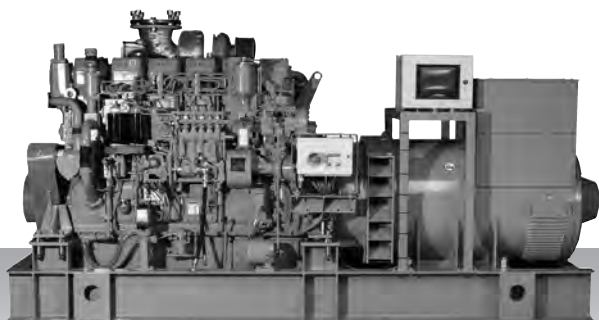
Product dimensions & dry weight

L (mm) : 3,600
W (mm) : 1,615
H (mm) : 1,900
Dry weight (kg) : 5,900

Dimensions and weight are based on standard configuration.

Generator set -
IMO Tier II / EU-3A

MAS 760-S



Engine model S6R2-T2MPTK

Commercial rating

	kVA	kWe	rpm	Hz	Emission
Diesel-electric propulsion	594	476	1,200	60	IMO-T2
	765	612	1,500	50	IMO-T2
Auxiliary generator	594	476	1,200	60	IMO-T2
	765	612	1,500	50	IMO-T2

Specifications/ data subject to change without prior notice.

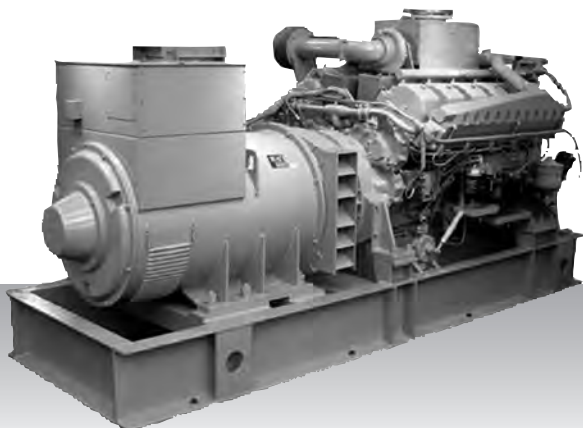
Product dimensions & dry weight

L (mm) : 3,600
W (mm) : 1,615
H (mm) : 1,931
Dry weight (kg) : 6,030

Dimensions and weight are based on standard configuration.

Generator set -
IMO Tier II / EU-3A

MAS 850-S



Engine model S12A2-MPTAW

Commercial rating

	kVA	kWe	rpm	Hz	Emission
Diesel-electric propulsion	847	678	1,500	50	IMO-T2
	898	718	1,800	60	IMO-T2
Auxiliary generator	847	678	1,500	50	IMO-T2
	988	790	1,800	60	IMO-T2

Specifications/ data subject to change without prior notice.

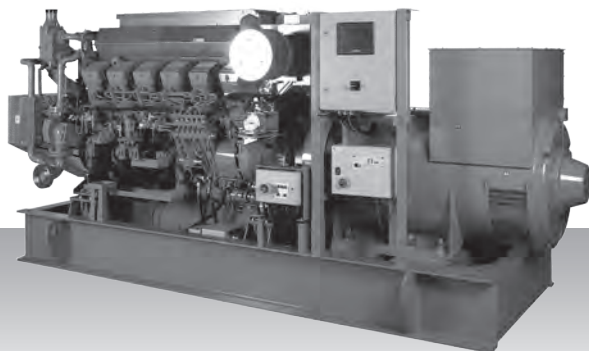
Product dimensions & dry weight

L (mm) : 3,760
W (mm) : 1,818
H (mm) : 1,900
Dry weight (kg) : 8,000

Dimensions and weight are based on standard configuration.

Generator set -
IMO Tier II / EU-3A

MAS 1350-S



Engine model S12R-MPTAW

Commercial rating

	kVA	kWe	rpm	Hz	Emission
Diesel-electric propulsion	999	799	1,200	60	IMO-T2
	1,351	1,081	1,500	50	IMO-T2
	1,385	1,108	1,800	60	IMO-T2
Auxiliary generator	999	799	1,200	60	IMO-T2
	1,351	1,081	1,500	50	IMO-T2
	1,529	1,223	1,800	60	IMO-T2

Specifications/ data subject to change without prior notice.

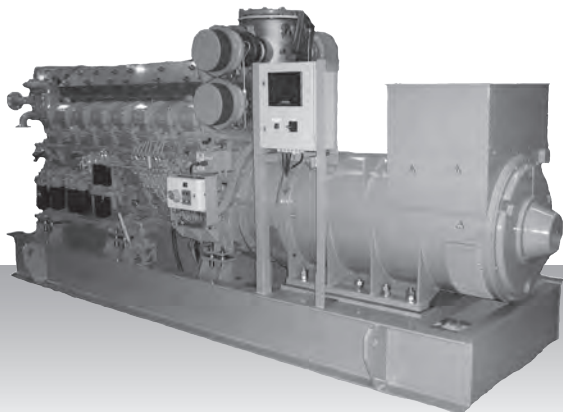
Product dimensions & dry weight

L (mm) : 4,100
W (mm) : 1,725
H (mm) : 2,280
Dry weight (kg) : 10,000

Dimensions and weight are based on standard configuration.

Generator set -
IMO Tier II / EU-3A

MAS 1795-S



Engine model S16R-MPTAW

Commercial rating

	kVA	kWe	rpm	Hz	Emission
Diesel-electric propulsion	1,337	1,070	1,200	60	IMO-T2
	1,796	1,437	1,500	50	IMO-T2
	1,857	1,485	1,800	60	IMO-T2
Auxiliary generator	1,337	1,070	1,200	60	IMO-T2
	1,796	1,437	1,500	50	IMO-T2
	2,041	1,633	1,800	60	IMO-T2

Specifications/ data subject to change without prior notice.

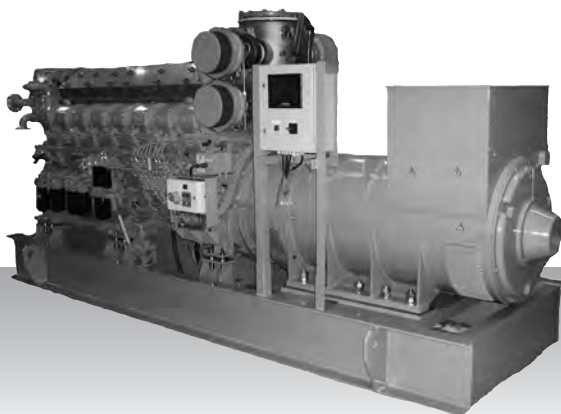
Product dimensions & dry weight

L (mm) : 4,880
W (mm) : 1,725
H (mm) : 2,280
Dry weight (kg) : 14,000

Dimensions and weight are based on standard configuration.

Generator set -
IMO Tier II / EU-3A

MAS 2350-S



Engine model S16R2-T2MPTAW

Commercial rating

	kVA	kWe	rpm	Hz	Emission
Diesel-electric propulsion	1,881	1,505	1,200	60	IMO-T2
	2,358	1,886	1,500	50	IMO-T2
Auxiliary generator	1,881	1,505	1,200	60	IMO-T2
	2,358	1,886	1,500	50	IMO-T2

Specifications/ data subject to change without prior notice.

Product dimensions & dry weight

L (mm) : 4,950
W (mm) : 1,750
H (mm) : 2,400
Dry weight (kg) : 18,000

Dimensions and weight are based on standard configuration.