

Diesel-electric propulsion specifications

ENGINE MODEL LINE-UP - MARINE DIESEL-ELECTRIC PROPULSION

Series	100 kW	500 kW	1,000 kW	2,000 kW	5,000 kW
High speed					
S6R2		500 □ 640			
S6R		545 □ 577			
S12A2			709 □ 752		
S12R			840 □ 1,154		
S16R				1,120 □ 1,536	
S16R2					1,568 □ 1,960
Medium speed					
S6U			1,045 □ 1,343		
S6U2			1,161 □ 1,363		
S8U				1,394 □ 1,790	
S12U					2,090 □ 2,685
S16U					2,787 □ 3,580

Diesel-electric propulsion products - IMO Tier II - High speed

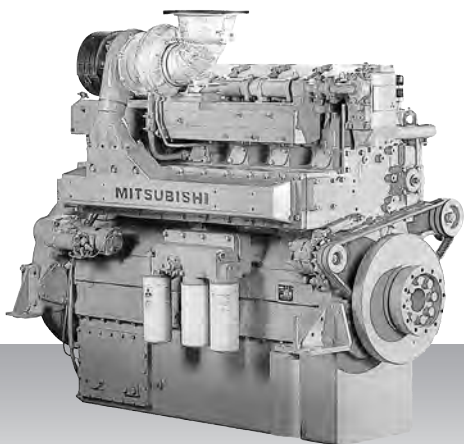
Engine model	kW	bhp	rpm	Hz	Emission	Page
50 Hz						
S6R-MPTAW	545	731	1,500	50	IMO-T2	54
S6R2-T2MPTK	640	858	1,500	50	IMO-T2	55
S12A2-MPTAW	709	951	1,500	50	IMO-T2	56
S12R-MPTAW	1,120	1,502	1,500	50	IMO-T2	57
S16R-MPTAW	1,500	2,012	1,500	50	IMO-T2	58
S16R2-T2MPTAW	1,960	2,628	1,500	50	IMO-T2	59
60 Hz						
S6R-MPTAW	577	774	1,800	60	IMO-T2	54
S6R2-T2MPTK	500	671	1,200	60	IMO-T2	55
S12A2-MPTAW	752	1,008	1,800	60	IMO-T2	56
S12R-MPTAW	840	1,126	1,200	60	IMO-T2	57
S12R-MPTAW	1,154	1,548	1,800	60	IMO-T2	57
S16R-MPTAW	1,120	1,502	1,200	60	IMO-T2	58
S16R-MPTAW	1,536	2,060	1,800	60	IMO-T2	58
S16R2-T2MPTAW	1,568	2,103	1,200	60	IMO-T2	59

Diesel-electric propulsion products - IMO Tier II - Medium speed

Engine model	kW	bhp	rpm	Hz	Emission	Page
50 Hz						
S6U-MPTK	1,142	1,531	1,000	50	IMO-T2	60
S6U-MPTK	1,270	1,703	1,000	50	IMO-T2	60
S6U2-MPTK	1,234	1,655	1,000	50	IMO-T2	61
S6U2-MPTK	1,363	1,828	1,000	50	IMO-T2	61
S8U-MPTK	1,522	2,041	1,000	50	IMO-T2	62
S8U-MPTK	1,693	2,270	1,000	50	IMO-T2	62
S12U-MPTK	2,283	3,062	1,000	50	IMO-T2	63
S12U-MPTK	2,541	3,408	1,000	50	IMO-T2	63
S16U-MPTK	3,045	4,083	1,000	50	IMO-T2	64
S16U-MPTK	3,388	4,543	1,000	50	IMO-T2	64
60 Hz						
S6U-MPTK	1,045	1,401	900	60	IMO-T2	60
S6U-MPTK	1,205	1,616	1,200	60	IMO-T2	60
S6U-MPTK	1,150	1,542	900	60	IMO-T2	60
S6U-MPTK	1,343	1,801	1,200	60	IMO-T2	60
S6U2-MPTK	1,161	1,557	900	60	IMO-T2	61
S6U2-MPTK	1,250	1,676	900	60	IMO-T2	61
S8U-MPTK	1,394	1,869	900	60	IMO-T2	62
S8U-MPTK	1,608	2,156	1,200	60	IMO-T2	62
S8U-MPTK	1,533	2,056	900	60	IMO-T2	62
S8U-MPTK	1,790	2,400	1,200	60	IMO-T2	62
S12U-MPTK	2,090	2,803	900	60	IMO-T2	63
S12U-MPTK	2,412	3,235	1,200	60	IMO-T2	63
S12U-MPTK	2,299	3,083	900	60	IMO-T2	63
S12U-MPTK	2,685	3,601	1,200	60	IMO-T2	63
S16U-MPTK	2,787	3,737	900	60	IMO-T2	64
S16U-MPTK	3,215	4,311	1,200	60	IMO-T2	64
S16U-MPTK	3,065	4,110	900	60	IMO-T2	64
S16U-MPTK	3,580	4,801	1,200	60	IMO-T2	64

Diesel-electric propulsion - IMO Tier II
High speed

S6R-MPTAW



6-cylinder, 4-cycle, water cooled diesel engine,
with direct-injection, turbocharger and air-cooler.

Bore x stroke (mm) : 170 x 180

Displacement (l) : 24.51

Commercial rating

kW	bhp	rpm	Hz	Fuel cons. l/hr*	Emission
545	731	1,500	50	65.1	IMO-T2
577	774	1,800	60	on request	IMO-T2

*Average fuel consumption according to ISO, see page 6.
Specifications / data subject to change without prior notice.

Product dimensions & dry weight

L (mm) : 1,786

W (mm) : 1,220

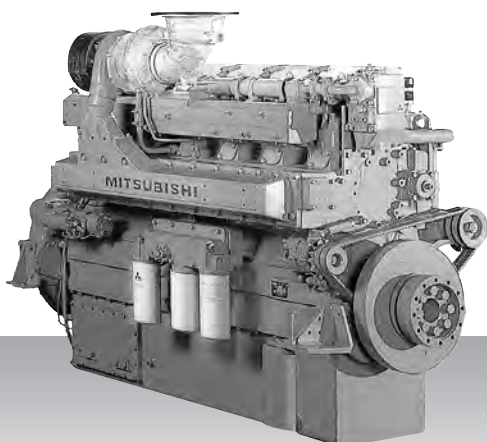
H (mm) : 1,650

Dry weight (kg) : 2,913

Dimensions and weight are based on standard configuration.

Diesel-electric propulsion - IMO Tier II
High speed

S6R2-T2MPTK



6-cylinder, 4-cycle, water cooled diesel engine,
with direct-injection, turbocharger and air-cooler.

Bore x stroke (mm) : 170 x 220

Displacement (l) : 29.96

Commercial rating

kW	bhp	rpm	Hz	Fuel cons. l/hr*	Emission
500	671	1,200	60	58.6	IMO-T2
640	858	1,500	50	78.4	IMO-T2

*Average fuel consumption according to ISO, see page 6.
Specifications / data subject to change without prior notice.

Product dimensions & dry weight

L (mm) : 1,811

W (mm) : 1,108

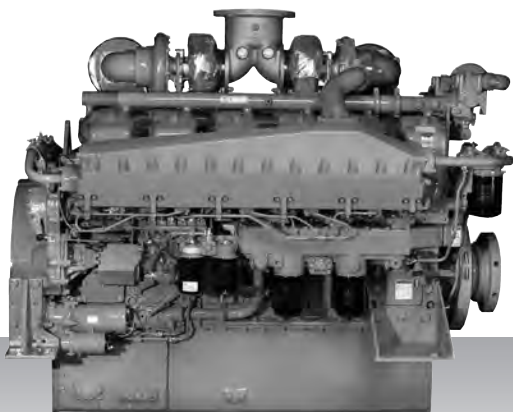
H (mm) : 1,694

Dry weight (kg) : 2,960

Dimensions and weight are based on standard configuration.

Diesel-electric propulsion - IMO Tier II
High speed

S12A2-MPTAW



12-cylinder, 4-cycle, water cooled diesel engine,
with direct-injection, turbocharger and air-cooler.

Bore x stroke (mm) : 150 x 160

Displacement (l) : 33.93

Commercial rating

kW	bhp	rpm	Hz	Fuel cons. l/hr*	Emission
709	951	1,500	50	85.0	IMO-T2
752	1,008	1,800	60	on request	IMO-T2

*Average fuel consumption according to ISO, see page 6.
Specifications / data subject to change without prior notice.

Product dimensions & dry weight

L (mm) : 2,059

W (mm) : 1,654

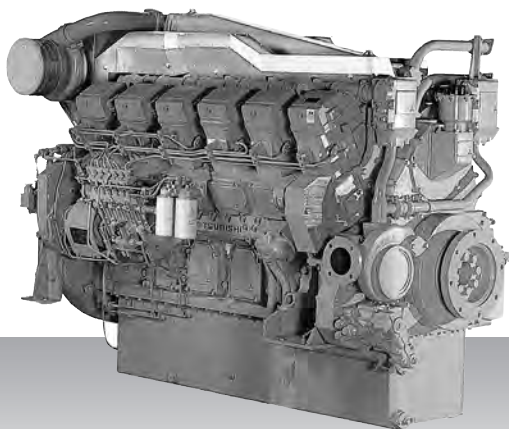
H (mm) : 1,596

Dry weight (kg) : 3,840

Dimensions and weight are based on standard configuration.

Diesel-electric propulsion - IMO Tier II
High speed

S12R-MPTAW



12-cylinder, 4-cycle, water cooled diesel engine,
with direct-injection, turbocharger and air-cooler.

Bore x stroke (mm) : 170 x 180

Displacement (l) : 49.03

Commercial rating

kW	bhp	rpm	Hz	Fuel cons. l/hr*	Emission
840	1,126	1,200	60	on request	IMO-T2
1,120	1,502	1,500	50	on request	IMO-T2
1,154	1,548	1,800	60	on request	IMO-T2

*Average fuel consumption according to ISO, see page 6.
Specifications / data subject to change without prior notice.

Product dimensions & dry weight

L (mm) : 2,416

W (mm) : 1,585

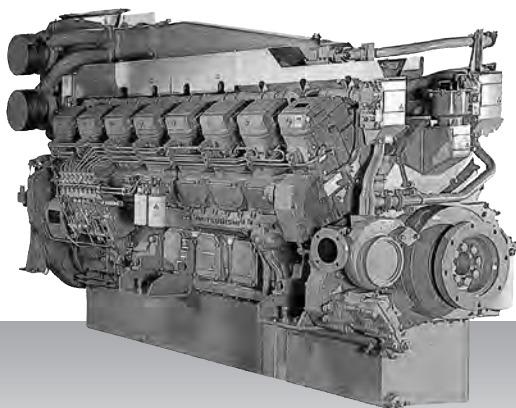
H (mm) : 1,807

Dry weight (kg) : 5,470

Dimensions and weight are based on standard configuration.

Diesel-electric propulsion - IMO Tier II
High speed

S16R-MPTAW



16-cylinder, 4-cycle, water cooled diesel engine,
with direct-injection, turbocharger and air-cooler.

Bore x stroke (mm) : 170 x 180

Displacement (l) : 65.37

Commercial rating

kW	bhp	rpm	Hz	Fuel cons. l/hr*	Emission
1,120	1,502	1,200	60	on request	IMO-T2
1,500	2,012	1,500	50	on request	IMO-T2
1,536	2,060	1,800	60	on request	IMO-T2

*Average fuel consumption according to ISO, see page 6.
Specifications / data subject to change without prior notice.

Product dimensions & dry weight

L (mm) : 2,971

W (mm) : 1,585

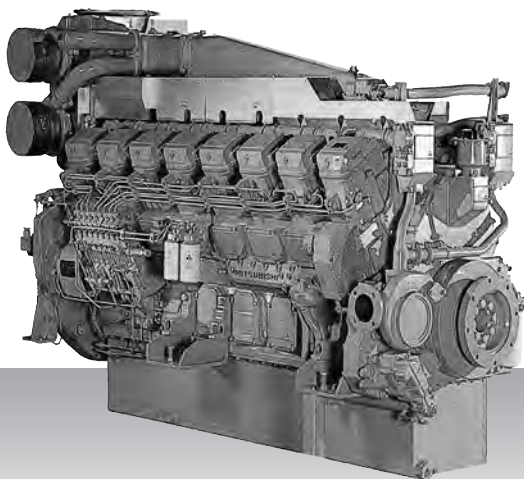
H (mm) : 1,960

Dry weight (kg) : 6,950

Dimensions and weight are based on standard configuration.

Diesel-electric propulsion - IMO - Tier II
High speed

S16R2-T2MPTAW



16-cylinder, 4-cycle, water cooled diesel engine,
with direct-injection, turbocharger and air-cooler.

Bore x stroke (mm) : 170 x 220

Displacement (l) : 79.90

Commercial rating

kW	bhp	rpm	Hz	Fuel cons. l/hr*	Emission
1,568	2,103	1,200	60	284.5	IMO-T2
1,960	2,628	1,500	50	360.6	IMO-T2

*Average fuel consumption according to ISO, see page 6.
Specifications / data subject to change without prior notice.

Product dimensions & dry weight

L (mm) : 2,946

W (mm) : 1,525

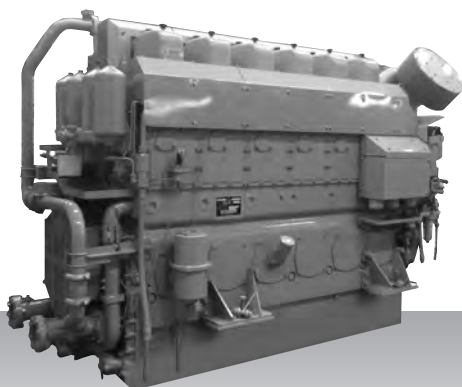
H (mm) : 2,030

Dry weight (kg) : 7,750

Dimensions and weight are based on standard configuration.

Diesel-electric propulsion - IMO Tier II
Medium speed

S6U-MPTK



6-cylinder, 4-cycle, water cooled diesel engine,
with direct-injection, turbocharger and air-cooler.

Bore x stroke (mm) : 240 x 260

Displacement (l) : 70.57

Commercial rating

Operation	kW	bhp	rpm	Hz	Fuel cons. g/kWh*	Emission
Continuous	1,045	1,401	900	60	on request	IMO-T2
	1,142	1,531	1,000	50	on request	IMO-T2
	1,205	1,616	1,200	60	on request	IMO-T2
Intermittent	1,150	1,542	900	60	on request	IMO-T2
	1,270	1,703	1,000	50	on request	IMO-T2
	1,343	1,801	1,200	60	on request	IMO-T2

*Fuel consumption value at 100% rated power in g/kWh.
Specifications / data subject to change without prior notice.

Product dimensions & dry weight

L (mm) : 3,211

W (mm) : 1,429

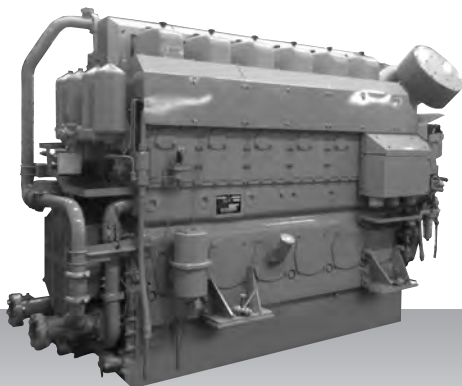
H (mm) : 2,104

Dry weight (kg) : 8,400

Dimensions and weight are based on standard configuration.

Diesel-electric propulsion - IMO Tier II
Medium speed

S6U2-MPTK



6-cylinder, 4-cycle, water cooled diesel engine,
with direct-injection, turbocharger and air-cooler.

Bore x stroke (mm) : 240 x 300

Displacement (l) : 81.43

Commercial rating

Operation	kW	bhp	rpm	Hz	Fuel cons. g/kWh*	Emission
Continuous	1,161	1,557	900	60	on request	IMO-T2
	1,234	1,655	1,000	50	on request	IMO-T2
Intermittent	1,250	1,676	900	60	on request	IMO-T2
	1,363	1,828	1,000	50	on request	IMO-T2

*Fuel consumption value at 100% rated power in g/kWh.
Specifications / data subject to change without prior notice.

Product dimensions & dry weight

L (mm) : 3,226

W (mm) : 1,429

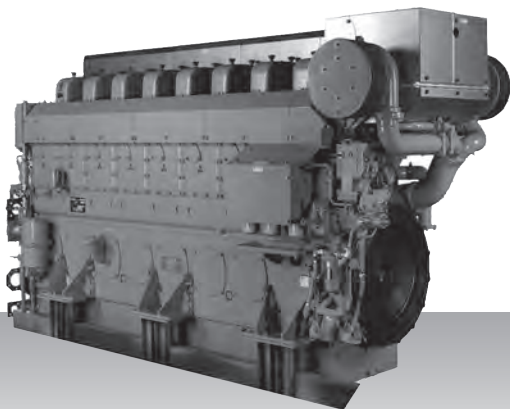
H (mm) : 2,177

Dry weight (kg) : 8,600

Dimensions and weight are based on standard configuration.

Diesel-electric propulsion - IMO Tier II
Medium speed

S8U-MPTK



8-cylinder, 4-cycle, water cooled diesel engine,
with direct-injection, turbocharger, air-cooler,.

Bore x stroke (mm) : 240 x 260

Displacement (l) : 94.10

Commercial rating

Operation	kW	bhp	rpm	Hz	Fuel cons. g/kWh*	Emission
Continuous	1,394	1,869	900	60	on request	IMO-T2
	1,522	2,041	1,000	50	on request	IMO-T2
	1,608	2,156	1,200	60	on request	IMO-T2
Intermittent	1,533	2,056	900	60	on request	IMO-T2
	1,693	2,270	1,000	50	on request	IMO-T2
	1,790	2,400	1,200	60	on request	IMO-T2

*Fuel consumption value at 100% rated power in g/kWh.
Specifications / data subject to change without prior notice.

Product dimensions & dry weight

L (mm) : 4,065

W (mm) : 1,539

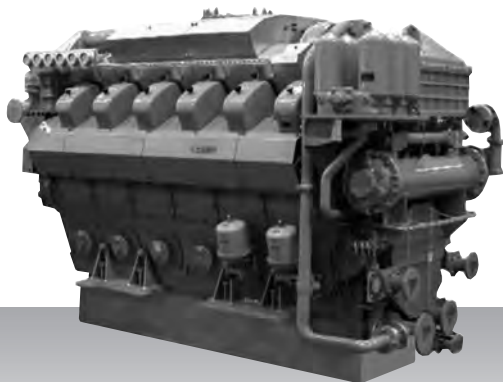
H (mm) : 2,192

Dry weight (kg) : 11,000

Dimensions and weight are based on standard configuration.

Diesel-electric propulsion - IMO Tier II
Medium speed

S12U-MPTK



12-cylinder, 4-cycle, water cooled diesel engine,
with direct-injection, turbocharger and air-cooler.

Bore x stroke (mm) : 240 x 260

Displacement (l) : 141.15

Commercial rating

Operation	kW	bhp	rpm	Hz	Fuel cons. g/kWh*	Emission
Continuous	2,090	2,803	900	60	on request	IMO-T2
	2,283	3,062	1,000	50	on request	IMO-T2
	2,412	3,235	1,200	60	on request	IMO-T2
Intermittent	2,299	3,083	900	60	on request	IMO-T2
	2,541	3,408	1,000	50	on request	IMO-T2
	2,685	3,601	1,200	60	on request	IMO-T2

*Fuel consumption value at 100% rated power in g/kWh.
Specifications / data subject to change without prior notice.

Product dimensions & dry weight

L (mm) : 3,562

W (mm) : 1,910

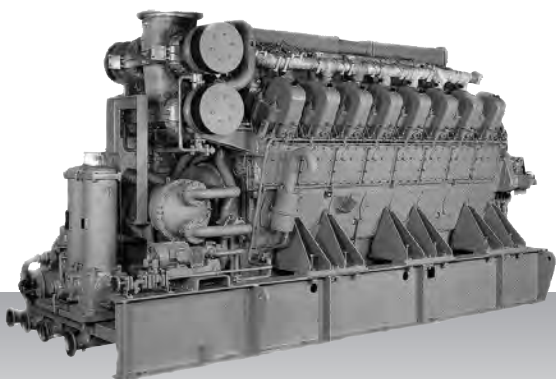
H (mm) : 2,374

Dry weight (kg) : 16,600

Dimensions and weight are based on standard configuration.

Diesel-electric propulsion - IMO Tier II
Medium speed

S16U-MPTK



16-cylinder, 4-cycle, water cooled diesel engine,
with direct-injection, turbocharger and air-cooler.

Bore x stroke (mm) : 240 x 260

Displacement (l) : 188.19

Commercial rating

Operation	kW	bhp	rpm	Hz	Fuel cons. g/kWh*	Emission
Continuous	2,787	3,737	900	60	on request	IMO-T2
	3,045	4,083	1,000	50	on request	IMO-T2
	3,215	4,311	1,200	60	on request	IMO-T2
Intermittent	3,065	4,110	900	60	on request	IMO-T2
	3,388	4,543	1,000	50	on request	IMO-T2
	3,580	4,801	1,200	60	on request	IMO-T2

*Fuel consumption value at 100% rated power in g/kWh.
Specifications / data subject to change without prior notice.

Product dimensions & dry weight

L (mm) : 4,628

W (mm) : 1,710

H (mm) : 2,473

Dry weight (kg) : 20,500

Dimensions and weight are based on standard configuration.